**Vault Con-Force Type 107**

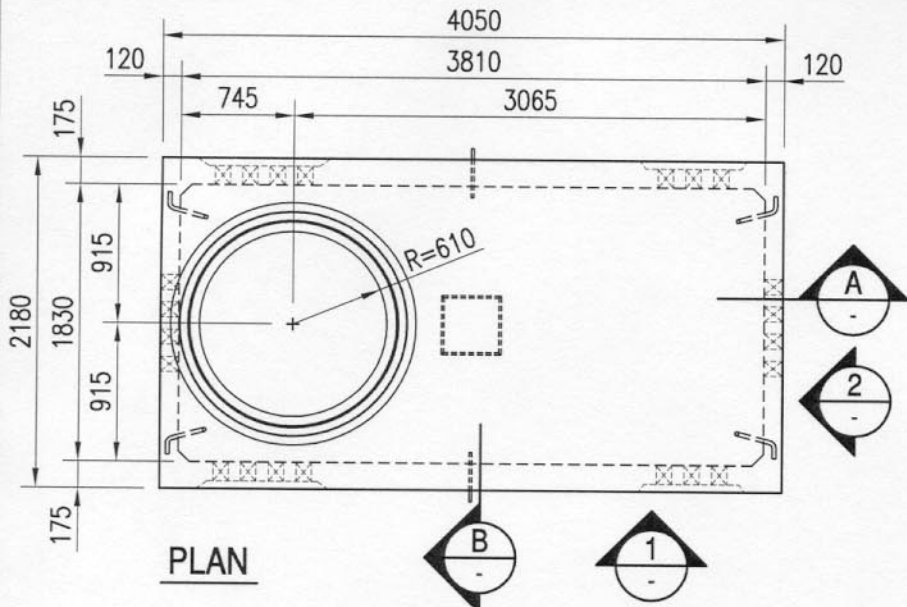
Total Mass (No Accessories): 14900 kg (32850 lbs)

Standard Entrance Ducts: 4" ϕ I.D. Type DBII

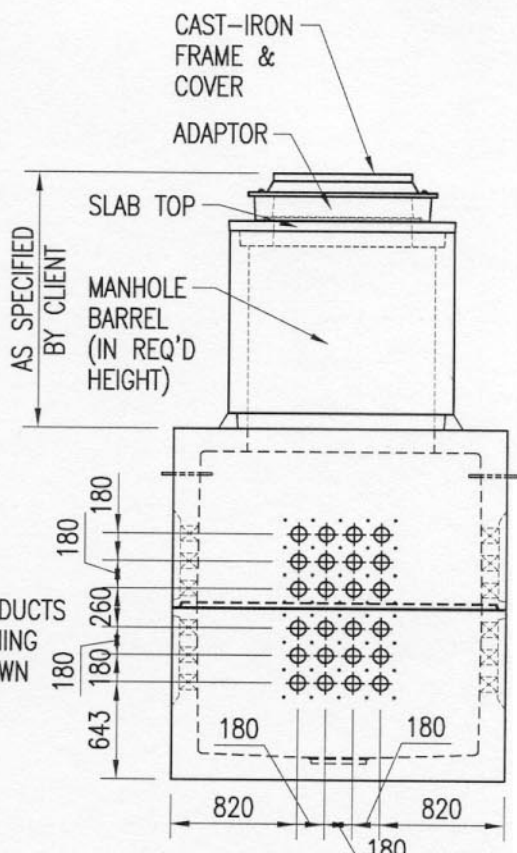
Entrance Duct Type, Size and Location can be Modified upon request.

Standard Accessories:

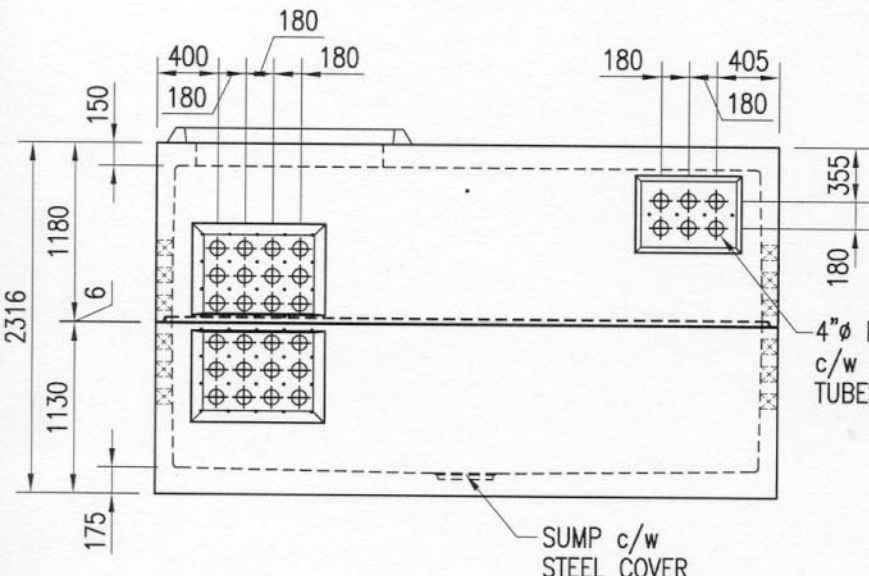
- Manhole Barrel
- Slab Top
- Adaptor
- Cast-Iron Frame & Cover



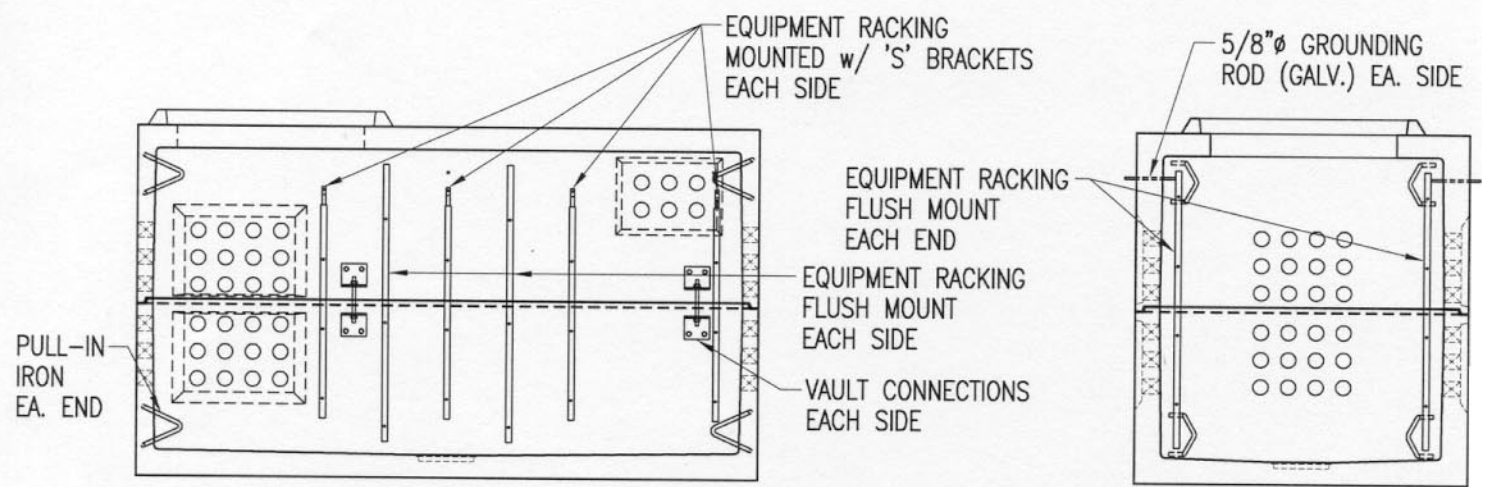
PLAN



2 ELEVATION



1 ELEVATION



A SECTION

B SECTION