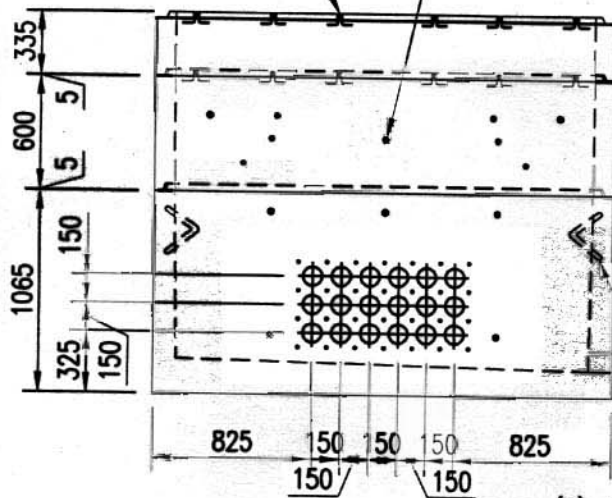


(6)-3/8" ϕ ITBF INSERTS
EA. SIDE EA. RISER

(12)-1/2" ϕ PD INSERTS
EA. SIDE

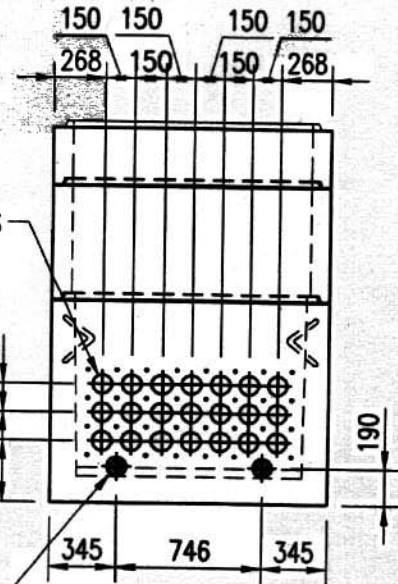


1 ELEVATION

4" ϕ DBII ENT. DUCTS
c/w PVC FORMING
TUBES AS SHOWN

PULL-IN IRONS
EA. CORNER

(2)-4" ϕ DR 28 COUPLERS
TIS END ONLY



2 ELEVATION

Pullbox Con-Force Type 316

Mass Base (316-01): 3350 kg (7385 lbs)

Mass Riser 600 Dp. (316-02): 1175 kg (2590 lbs)

Mass Riser 300 Dp. (316-03): 655 kg (1445 lbs)

Optional 1/4" Checker Plate Covers are available.