



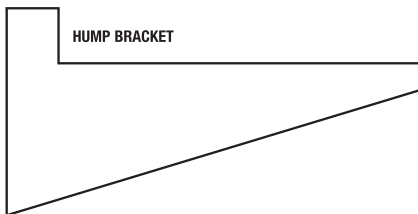
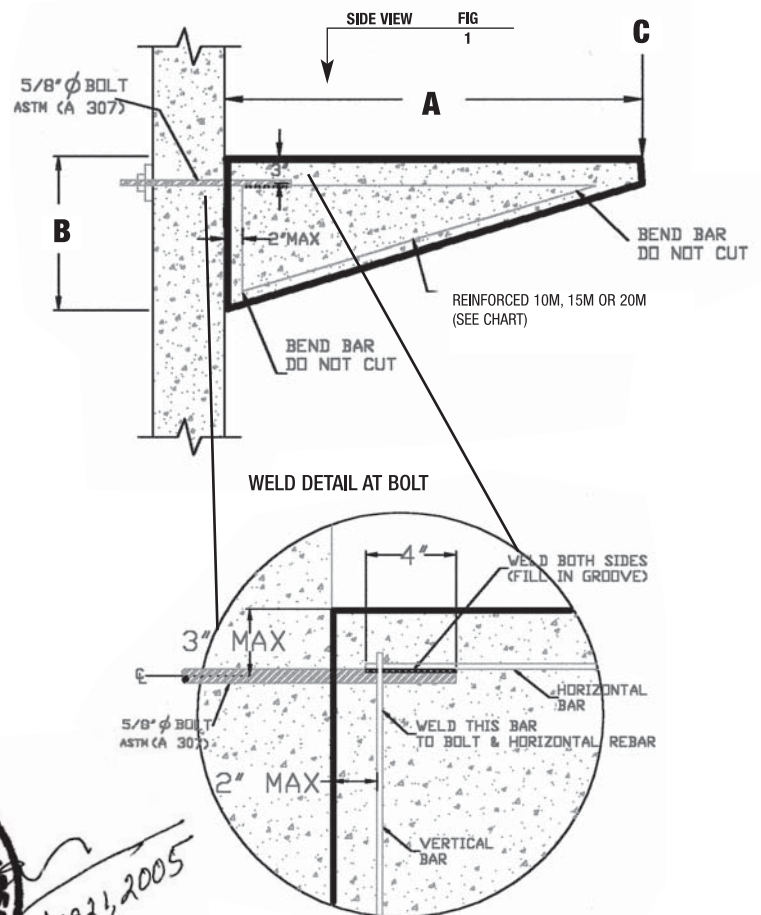
Precast Concrete Brackets

Building With You At Con-Force we've been building with our customers and communities for more than 50 years. The experience and dedication of our estimates, order desk, service and installation personnel is unmatched. Con-Force people are there for you every step of the way.

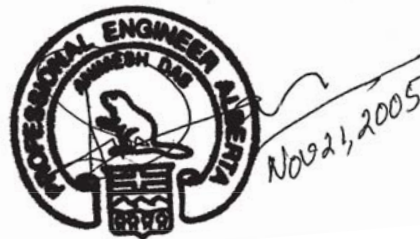
Specifications

Con-Force precast concrete brackets are excellent for supporting steps, decks, sidewalks and posts. Brackets have the ability to safely support the allowable point loads stated in the chart below. Additional loads such as roof structures that are applied on top of steps and decks need to be confirmed and checked by the contractor or homebuilder.

| REINFORCEMENT | LENGTH - A | | HEIGHT - B | | ALLOWABLE POINT LOAD - C | |
|---------------------|------------|-------|------------|------|--------------------------|--------|
| | mm | (in) | mm | (in) | kN | (lbs) |
| 10M | 610 | (24) | 355 | (14) | 10.67 | (2400) |
| 10M | 915 | (36) | 355 | (14) | 7.56 | (1700) |
| 10M | 1065 | (42) | 480 | (19) | 10.22 | (2300) |
| 10M | 1220 | (48) | 480 | (19) | 9.33 | (2100) |
| 10M | 1320 | (52) | 480 | (19) | 6.67 | (1500) |
| 15M | 1525 | (60) | 610 | (24) | 10.67 | (2400) |
| 15M | 1625 | (64) | 610 | (24) | 9.78 | (2200) |
| 15M | 1830 | (72) | 610 | (24) | 8.89 | (2000) |
| 15M | 1980 | (78) | 610 | (24) | 8.44 | (1900) |
| 15M | 2135 | (84) | 610 | (24) | 7.11 | (1600) |
| 15M | 2440 | (96) | 610 | (24) | 6.22 | (1400) |
| 20M | 2745 | (108) | 760 | (30) | 4.44 | (1000) |
| 20M | 3000 | (120) | 760 | (30) | 4.00 | (900) |
| HUMP BRACKET | | | | | | |
| 20M | 1370 | (54) | 710 | (28) | 15.56 | (3500) |
| 20M | 1625 | (64) | 710 | (28) | 11.11 | (2500) |



HUMP BRACKET



Fast Track to Success

Con-Force's unique **Fast Track System** gives you piece of mind. From the moment you order to the day we deliver and install, our system controls every detail of your order and provides you with the up to the minute information. It's just another way we demonstrate our commitment to customer service.

Concrete Leadership

Our wide variety of precast concrete, packaged concrete, and concrete landscaping products are designed with you in mind and, often to your specific requirements.

Because we know you need reliability and quality, our residential and commercial precast plants and state-of-the-art packaging plant operate year-round in a tightly controlled environment.

Con-Force Concrete Products joins a group of companies dedicated to providing concrete products to industries across Canada. We have 7 manufacturing facilities in Western Canada dedicated to producing various concrete products. Con-Force as a whole is a part of the ARMTEC Limited Partnership which is a conglomerate of companies across Canada.

Con-Force Concrete Products

Calgary 403 279 8161
 Edmonton 780 960 3204
 Toll-Free 1 800 486 4917

www.CON-FORCE.com