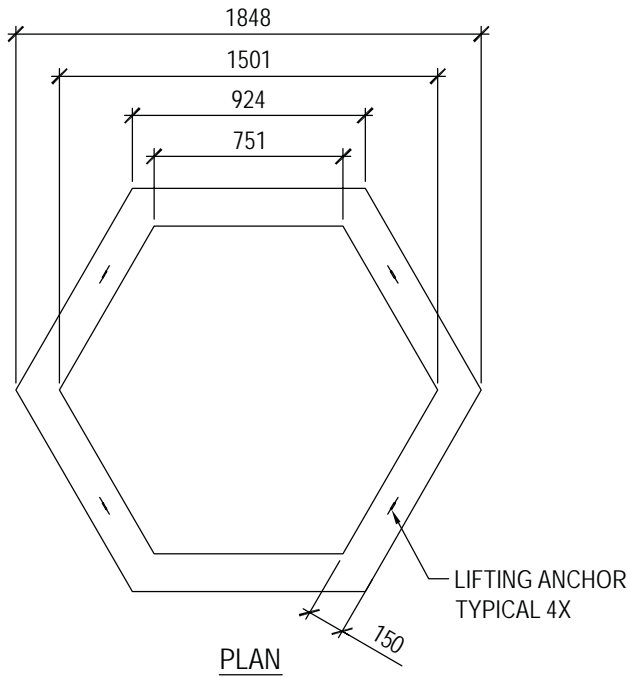


**HEXAGON PULL BOX
 RISER**

Product No: SP40013



TECHNICAL DATA	
CSA Approved Conforms with CSA Standard A23.4-00	
Concrete	35 MPa @ 28 days Cement: Type 50 Sulphate Resistant
Steel	Grade 400
Mass	600 kg (1320 lbs)

