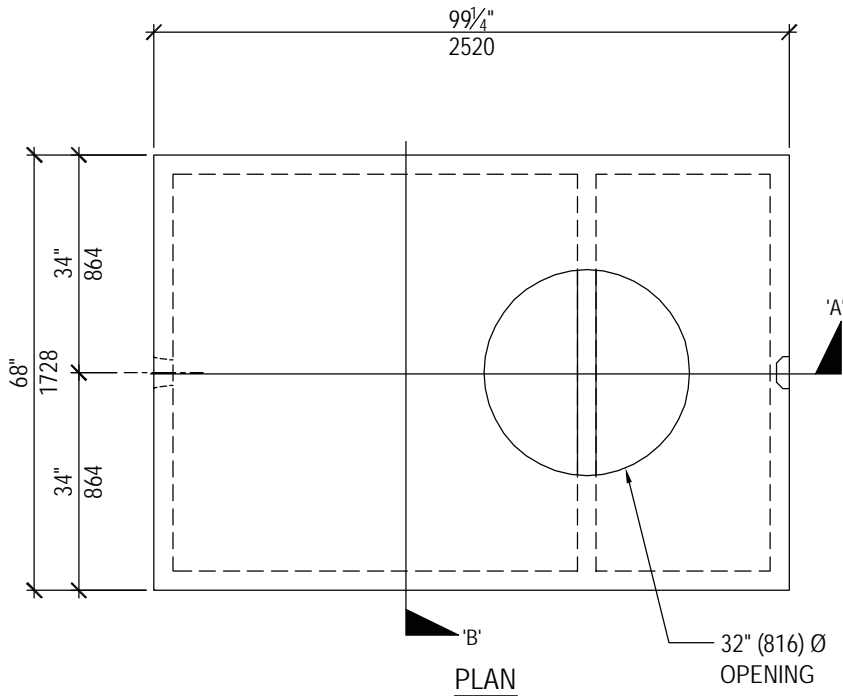


SEPTIC TANK

1000 - Holding
Product No: TA10001



TECHNICAL DATA		
CSA Approved Conforms with CSA Standard B66-05		
Working Capacities	Holding Chamber	5301 liters (1167 gallons)
Concrete	35 MPa @ 28 days Sulphate Resistant	
Mass (thin lid)	5094 kg (11230 lbs.)	
Mass (thick lid)	5616 kg (12380 lbs.)	
Reinforcement	Deformed rebar and Welded Wire Mesh	
Max. Burial Depth To Top	1.8 meters (6'-0")	

