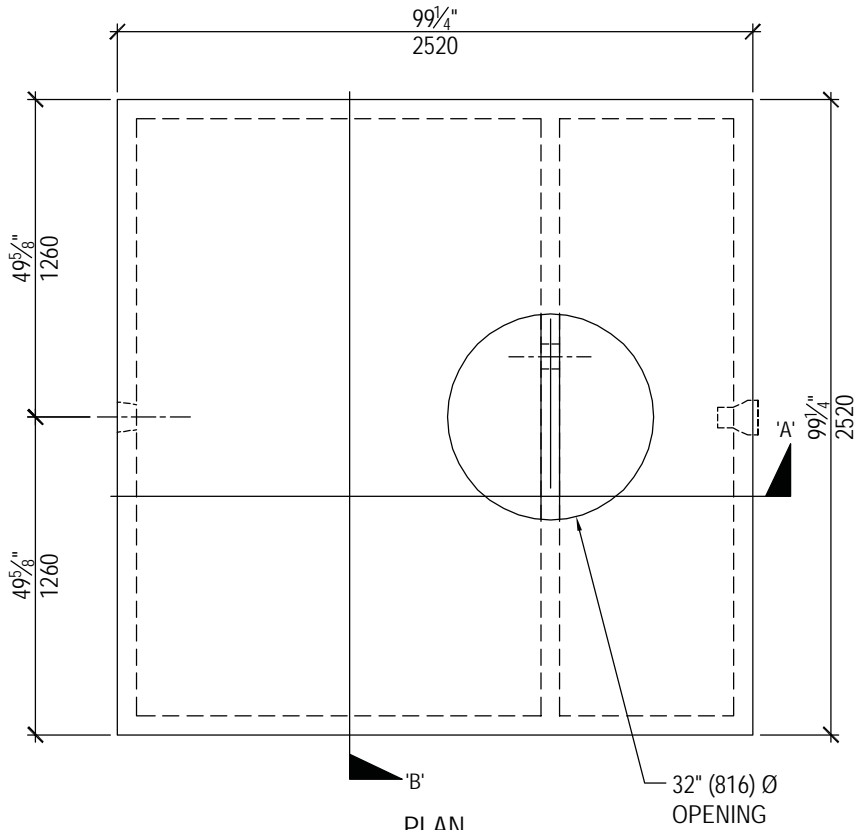


SEPTIC TANK

1500 - Siphon
 Product No: TA15003



TECHNICAL DATA		
CSA Approved Conforms with CSA Standard B66-05		
Working Capacities	Septic Chamber	5250 liters (1155 gallons)
	Effluent Chamber	2100 liters (462 gallons)
	Siphon Volume	578 liters (127 gallons)
Concrete	Avg. > 40 MPa @ 28 days Sulphate Resistant	
Mass	8275 kg (18240 lbs.)	
Reinforcement	Deformed rebar and Welded Wire Mesh	
Max. Burial Depth To Top	1.8 meters (6'-0")	

