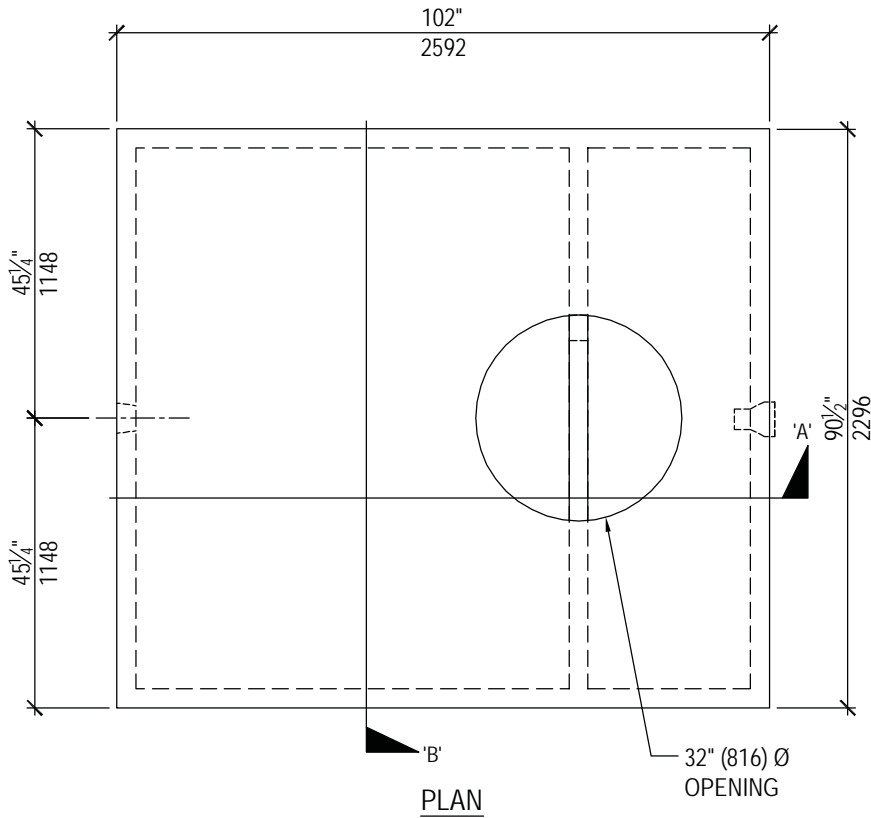


SEPTIC TANK

2000 - Siphon
Product No: TA20003



TECHNICAL DATA		
CSA Approved Conforms with CSA Standard B66-05		
Working Capacities	Septic Chamber	5267 liters (1160 gallons)
	Effluent Chamber	1809 liters (398 gallons)
	Siphon Volume	535 liters (118 gallons)
Concrete	35 MPa @ 28 days Sulphate Resistant	
Mass	8346 kg (18400 lbs.)	
Reinforcement	Deformed rebar and Welded Wire Mesh	
Max. Burial Depth To Top	1.8 meters (6'-0")	

