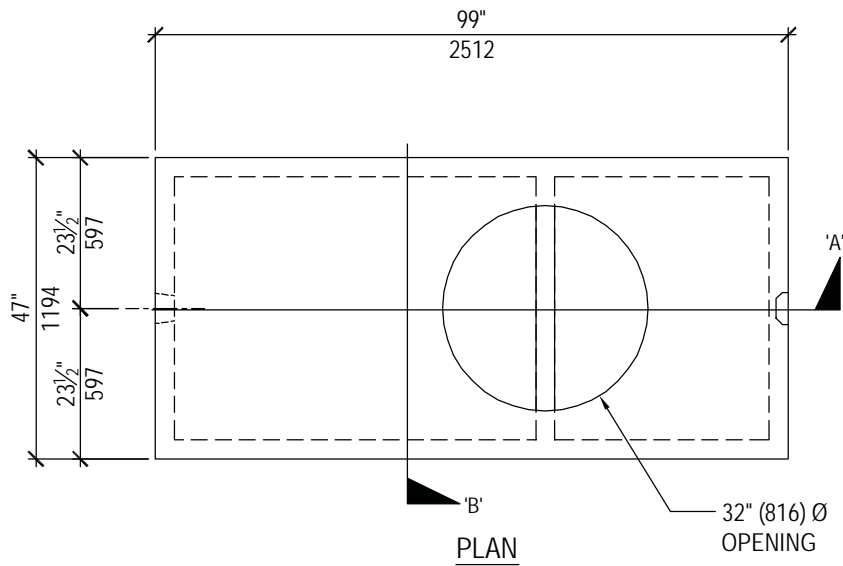


SEPTIC TANK

700 - Holding
Product No: TA7001



TECHNICAL DATA

CSA Approved
Conforms with CSA Standard B66-05

Working Capacities	Holding Chamber	2940 liters (648 gallons)
Concrete	35 MPa @ 28 days Sulphate Resistant	
Mass (thin lid)	3103 kg (6840 lbs.)	
Mass (thick lid)	3257 kg (7180 lbs.)	
Reinforcement	Deformed rebar and Welded Wire Mesh	
Max. Burial Depth To Top	1.8 meters (6'-0")	

