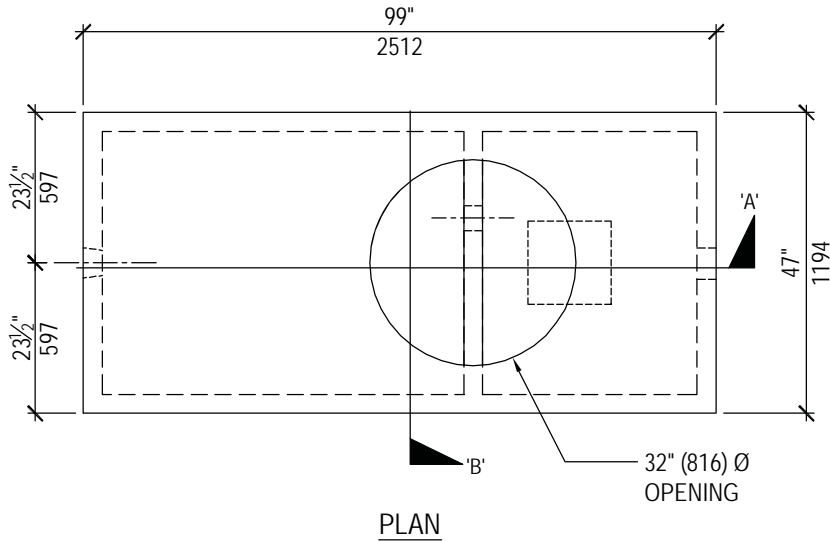


SEPTIC TANK

700 - Pumpout
Product No: TA7002



TECHNICAL DATA		
CSA Approved Conforms with CSA Standard B66-05		
Working Capacities	Septic Chamber	2600 liters (572 gallons)
	Effluent Chamber	1100 liters (242 gallons)
Concrete	35 MPa @ 28 days Sulphate Resistant	
Mass (thin lid)	3402 kg (7500 lbs.)	
Mass (thick lid)	4014 kg (8850 lbs.)	
Reinforcement	Deformed rebar and Welded Wire Mesh	
Max. Burial Depth To Top	1.8 meters (6'-0")	

