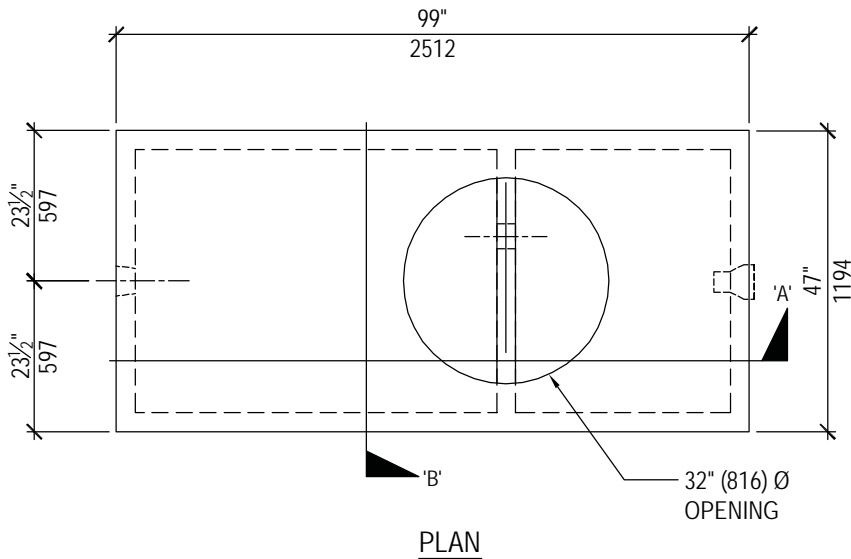


SEPTIC TANK
700 - Siphon
Product No: TA7003



| TECHNICAL DATA | | |
|---|--|---------------------------|
| CSA Approved Conforms with CSA Standard B66-05 | | |
| Working Capacities | Septic Chamber | 1818 liters (400 gallons) |
| | Effluent Chamber | 1004 liters (221 gallons) |
| | Siphon Volume | 361 liters (79 gallons) |
| Concrete | 35 MPa @ 28 days Sulphate Resistant | |
| Mass (thin lid) | 3350 kg (7385 lbs.) | |
| Mass (thick lid) | 3960 kg (8730 lbs.) | |
| Reinforcement | Deformed rebar and Welded Wire Mesh | |
| Max. Burial Depth To Top | 1.8 meters (6'-0") | |

