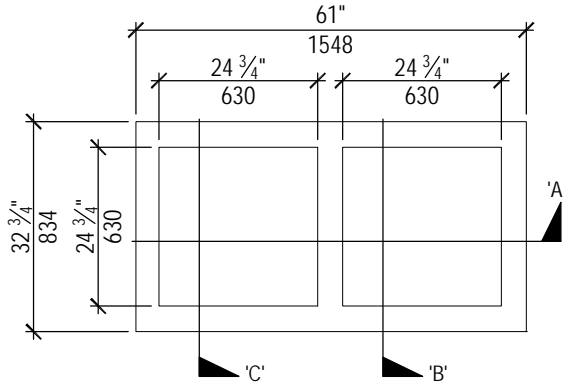
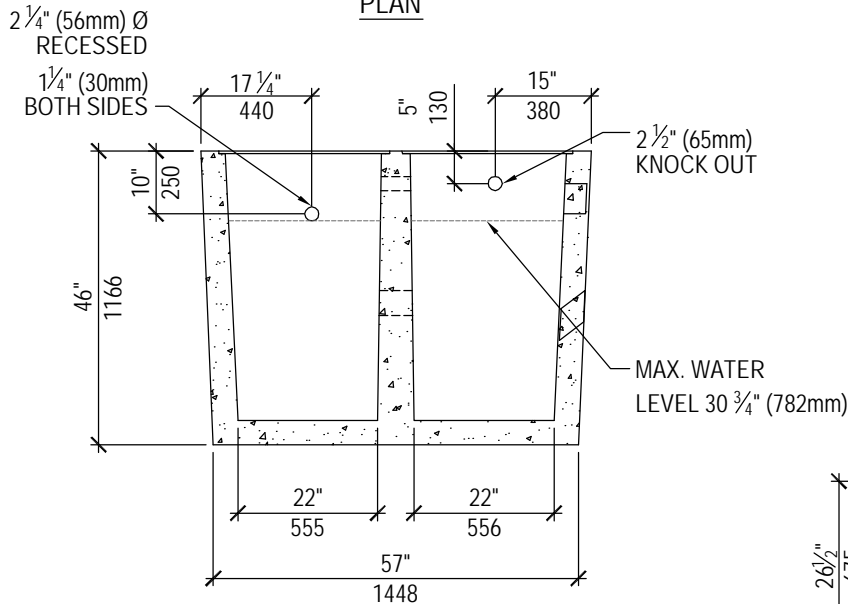


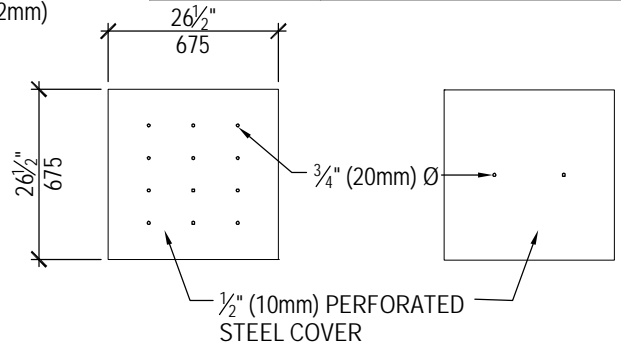
SUM P TANK
 (Two Compartment)
 Product No: TA1001



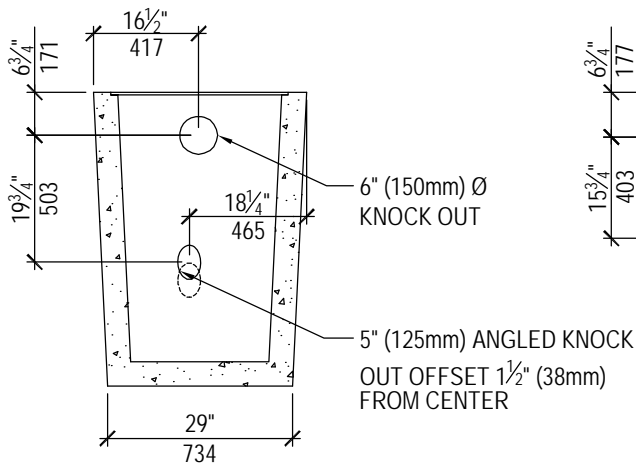
PLAN



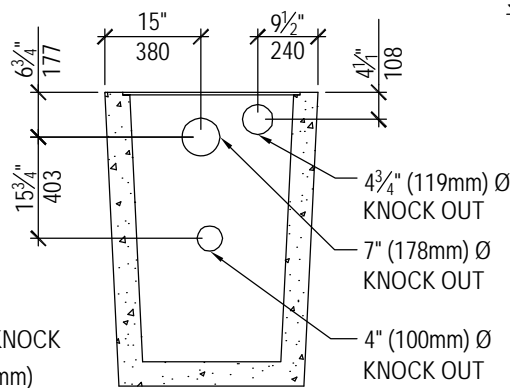
SECTION 'A'



STEEL COVER



SECTION 'B'



SECTION 'C'

TECHNICAL DATA		
CSA Approved Conforms with CSA Standard B66-05		
Working Capacities	Primary Chamber	250 liters (55 gallons)
	Effluent Chamber	250 liters (55 gallons)
	Siphon Volume	N/A
Concrete	35 MPa @ 28 days Sulphate Resistant	
Mass	1424 kg (3140 lbs.)	
Reinforcement	Deformed rebar and Welded Wire Mesh	