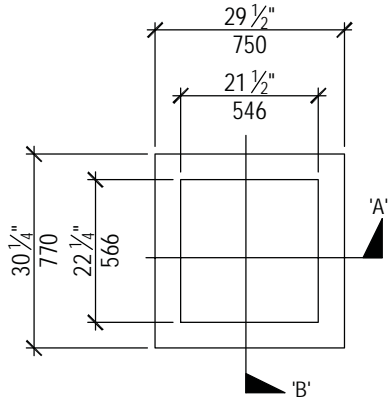
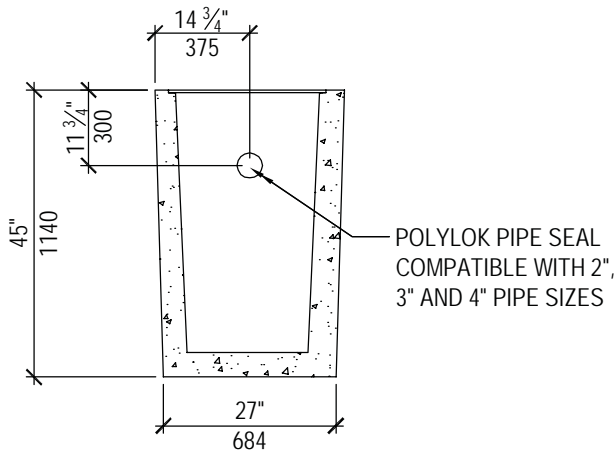


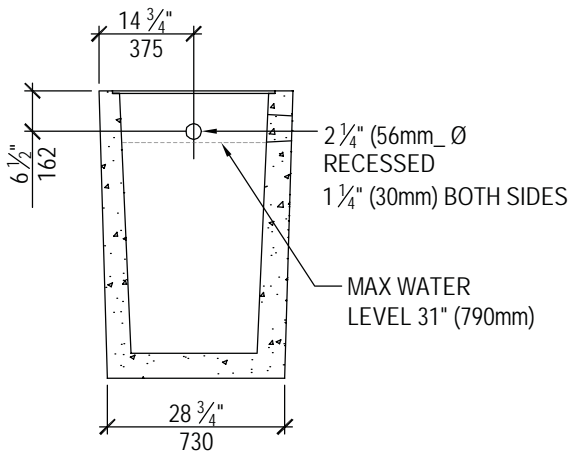
SUMP TANK
 (Single Compartment)
 Product No: TA1010



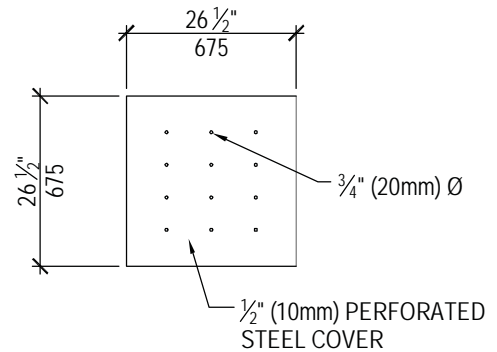
PLAN



SECTION 'A'



SECTION 'B'



STEEL COVER

TECHNICAL DATA		
CSA Approved Conforms with CSA Standard B66-05		
Working Capacities	Chamber	250 liters (55 gallons)
Concrete	35 MPa @ 28 days Sulphate Resistant	
Mass	581 kg (1280 lbs.)	
Reinforcement	Deformed rebar and Welded Wire Mesh	